

Organized by:



Hellenic  
Society of  
Pathology

Under the auspices of:



UNIVERSITY  
OF  
IOANNINA

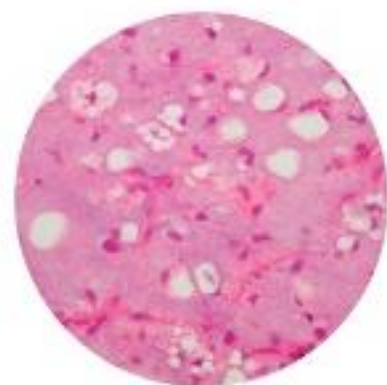
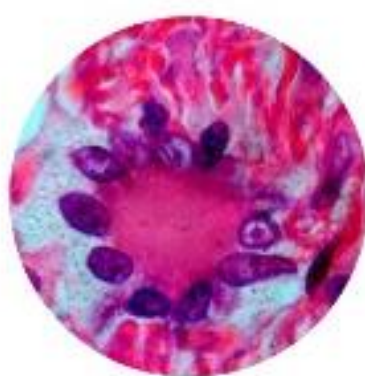
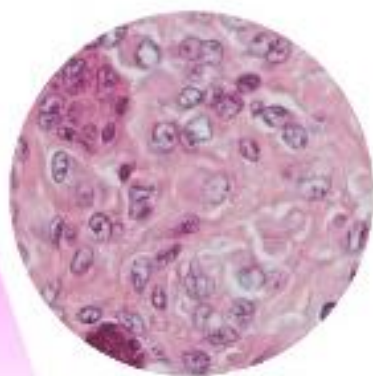


European  
Society of  
Pathology

# Web Scientific Event: Ioannina University Courses in Pathology - IUCP 2020

[www.pathology.gr](http://www.pathology.gr)

## Soft Tissue Pathology-Oncology



9-10 October 2020

**FINAL PROGRAMME**

**EXCLUSIVE**

Validated for chemical/  
biological hazards\*

## eGROSS pro-x

Simply the most  
innovative, safe  
grossing workstation

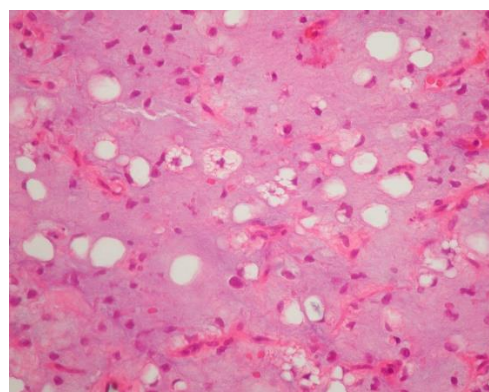
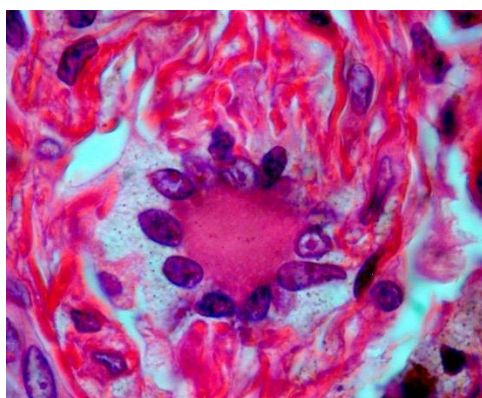


**MILESTONE**  
H E L P I N G  
P A T I E N T S

**MENARINI**  
diagnostics

## Contents

Welcome Message.....	5
Organization - Committees.....	6
Scientific Programme.....	7
General Information.....	10
Satellite Symposium.....	11
Faculty.....	11
Sponsors.....	14







CERTIFIED EN ISO 9001:2015

**ΒΙΟΔΥΝΑΜΙΚΗ ΑΕ**

KATEXAKH 54<sup>A</sup> • 115 25 ΑΘΗΝΑ • ΤΗΛ.: 210 64 49 421 • FAX: 210 64 42 266  
e-mail: info@biodynamics.gr

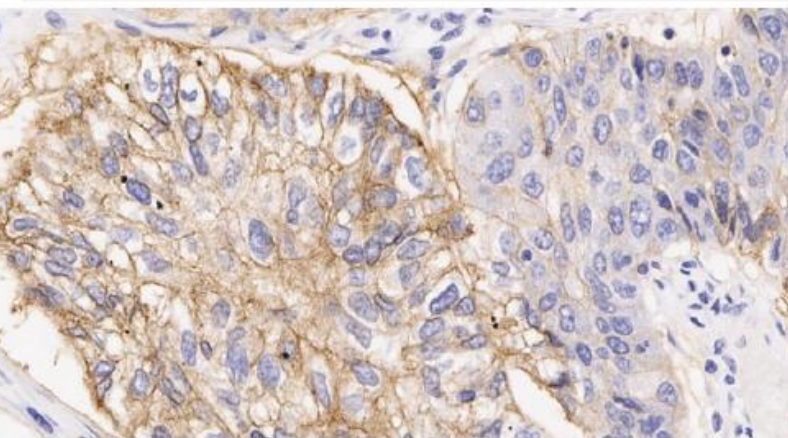
**Leica**  
BIO SYSTEMS

# PD-L1

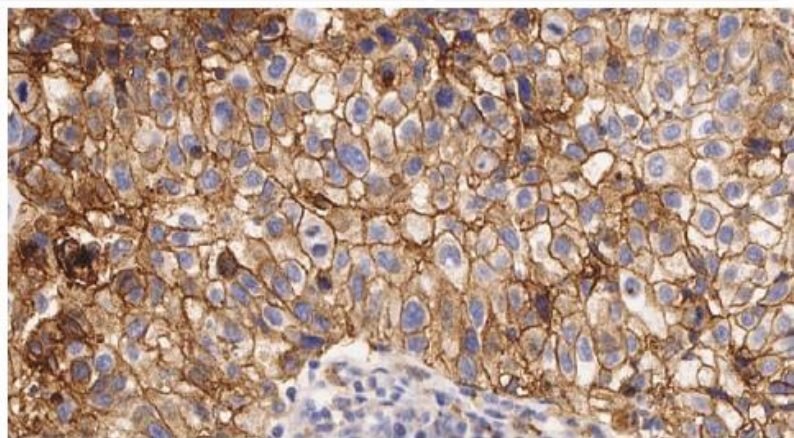
## PROGRAMMED DEATH-LIGAND 1

**Lu**

LUNG PATHOLOGY



Non-small cell lung cancer, stained with PD-L1 BOND Ready-to-Use Primary Antibody (73-10), PA0832



Non-small cell lung cancer, stained with PD-L1 BOND Ready-to-Use Primary Antibody (73-10), PA0832

PD-L1 (73-10) antibody for BOND, providing you with the freedom and flexibility to develop the tests you need.

Code	Name	Configuration	Retrieval
PA0832	7 mL Programmed Death-Ligand 1 (PD-L1)	BOND Ready-to-Use	P (HIER)

This antibody is recommended for the detection of specific antigens of interest in normal and neoplastic tissues, as an adjunct to conventional histopathology using non-immunologic histochemical stains.

**Deliver results you can rely on, and streamline workflow efficiency.**

Novocastra antibodies, in combination with the BOND platforms, provide a fully integrated and automated approach to IHC staining.

**LOAD**

PLACE THE  
BOND RTU AND  
DETECTION KIT  
IN THE BOND  
INSTRUMENT

**SELECT**

THE BOND  
SOFTWARE  
SETS OPTIMAL  
PROTOCOLS  
BASED ON  
ANTIBODY  
SELECTION

**RUN**

START AN  
IMMEDIATE  
OR DELAYED  
RUN TO  
OPTIMIZE LAB  
EFFICIENCY

**REVIEW**

# NOVOCASTRA

RESULTS YOU CAN RELY ON

## Welcome Message

**Ioannina University Courses in Pathology (IUCP)** are organized in Ioannina, Greece every year. These are postgraduate courses on selected topics of Human Pathology and have been offered since 1996, after the unanimous decision of the Executive Committee (Brussels, June 1995) of the European Society of Pathology, to give the ESP auspices to the organization of the IUCP.

Since the beginning, the aim of the courses is to bring together young Pathologists and Tutors, experts in the various fields of Pathology, as well as to encourage active participation of all colleagues during the discussions following the Lectures and the Slide Seminars, providing an in-depth review of Diagnostic Surgical Pathology. An emphasis is given on morphologic features, newly recognized entities and modern techniques. The Courses have been designed for 45-50 Pathologists and Clinical Colleagues related to the subject.

Starting from 2017, the organization of IUCP has been passed by Em. Prof. NJ Agnantis to the Hellenic Society of Pathology (HSP), and she has been nominated Honorary President of IUCP. For 2020, HSP is offering the 37<sup>th</sup> IUCP on **Soft Tissue Pathology-Oncology**. The 2020 IUCP was originally planned to be held in Ioannina, from 13-15 of March, but due to the COVID pandemic we were not able to host our distinguished faculty and attendees. Our commitment to training of young Pathologists and to continuing education of senior Pathologists, prompted us to convert the Ioannina-based course to a WEB Scientific event, to be offered from 9 to 10 of October 2020.

We thank the Speakers and Chairpersons who, despite pressing schedules, adapted willingly to the new format of the Course and participated in memorable Sessions. We also thank our participants/students, and encourage them to web-interact during the presentations.

We do hope that the presentations by experts on the field will meet your expectations and will increase your knowledge in this particular field of Pathology. We all greatly miss the in-person interactions during the Sessions, but also during the social events. The latter, together with the high quality of the scientific content have made IUCP famous worldwide. We can only promise that we shall meet again in Ioannina for the next IUCPs to come.

**Prof. Anna Batistatou**

President of  
Hellenic Society of Pathology

**Dr. Kalliopi Patsiaoura**

Secretary General of  
Hellenic Society of Pathology

## Organization - Committees

### Organization

---

#### Hellenic Society of Pathology

67, Dimokratias Av., Athens Tel. +30 210 6725532  
Fax +30 210 6725571, E-mail: helpath@otenet.gr

### Under the Auspices of

---



UNIVERSITY  
OF  
IOANNINA



European  
Society of  
Pathology

**Honorary President:** Em. Prof. Niki J. Agnantis

### Organizing Committee

---

<b>President:</b>	Anna Batistatou
<b>Vice President:</b>	Eleni Patsea
<b>General Secretary:</b>	Kalliopi Patsiaoura
<b>Deputy Secretary:</b>	Adamantia Zizi
<b>Treasurer:</b>	Petroula Arapantoni - Dadioti
<b>Members:</b>	Dimitrios Bouklas Anastasia Nikolaidou

### Scientific Committee

---

<b>Coordinator:</b>	Vasiliki Zolota
<b>Members:</b>	George Agrogiannis Maria Demonakou Elpida Giannikaki Triantafyllia Koletsa Antigoni Sourla Olympia Tzaida

## Scientific Programme

Friday, 9<sup>th</sup> October 2020

---

14.45-15.00 Welcome Notes

15.00-15.30 LECTURE

Chairpersons: Ass. Prof. A. Mitselou (GR), Assoc. Prof. D. Peschos (GR)

Histology of Mesenchymal Tissue

Ass. Prof. V. Galani (GR)

---

15.30-16.30 SESSION I

Chairpersons: Dr. S. Kamina (GR), Dr. A. Zizi (GR)

15.30-16.00 Introduction of Soft Tissue Tumor Pathology: Classification and Grading

Dr. A. Nikolaidou (GR)

16.00-16.30 Immunohistochemical and Molecular Pathology in Diagnosis of Soft Tissue Tumours

Dr. S. Sotiriou (GR)

---

16.30-18.00 SESSION II

Chairpersons: Ass. Prof. A. Papoudou-Bai (GR), Dr. E. Patsea (GR), Dr. A. Zioga (GR)

16.30-17.15 The Most Common Spindle Cell Tumors of Deep Soft Tissue in Adults: Diagnostic Approach

Dr. E. Skarpidi (GR)

17.15-18.00 Gastrointestinal Stromal Tumors

Assoc. Prof. G. Agrogiannis (GR)

---

18.00-18.15 B r e a k

18.15-20.15 SESSION III

Chairpersons: Dr. E. Giannikaki (GR), Dr. A. Nikolaidou (GR), Dr. K. Patsiaoura (GR)

Undifferentiated small round cell sarcomas other than Ewing sarcoma

Ass. Prof. K. Linos (USA)

Pearls and pitfalls of selected immunohistochemical stains in cutaneous mesenchymal tumors

Ass. Prof. K. Linos (USA)

---

# Ioannina University Courses in Pathology (IUCP 2020)

## Soft Tissue Pathology-Oncology

### 20.15-20.45 OPENING LECTURE

Chairpersons: Prof. A. Batistatou (GR), Prof. A. Goussia (GR)

IUCP History

Em. Prof. N. J. Agnantis (GR)

---

## Saturday, 10<sup>th</sup> October 2020

---

### 09.00-10.30 SESSION IV

Chairpersons: Dr. S. Mavropoulou (GR), Dr. A. Sourla (GR)

09.00-10.00 Vascular Tumors

Prof. P. Korkolopoulou (GR)

10.00-10.30 [Slide Seminar I](#)

Cases 1-3: Dr. Z. Evangelou (GR), Prof. A. Batistatou (GR)

Cases 4-6: Dr. M. Kilmpasani (GR), Prof. A. Batistatou (GR)

---

### 10.30-12.15 SESSION V

Chairpersons: Prof. A. Batistatou (GR), Prof. V. Zolota (GR)

10.30-12.15 Pleomorphic Soft Tissue Tumors: A Diagnostic Algorithm and [Slide Seminar II](#)

Dr. Prof. D. Creytens (BEL)

---

### 12.15-13.45 SESSION VI

Chairpersons: Assoc. Prof. G. Agrogiannis (GR), Dr. M. Bobos (GR), Dr. D. Bouklas (GR)

12.15-12.45 An Approach of Epithelioid Soft Tissue Tumors

Dr. K. Diamantopoulou (GR)

12.45-13.15 Update on Myxoid Soft Tissue Tumors

Dr. D. Mourtzoukou (GR)

13.15-13.45 Pseudosarcomas of Soft Tissues

Prof. D. Papachristou (GR)

---

13.45-14.45 B r e a k



# Ioannina University Courses in Pathology (IUCP 2020)

## Soft Tissue Pathology-Oncology

### 14.45-15.30 Slide Seminar III

Chairpersons: Dr. P. Arapantoni-Dadioti (GR), Dr. M. Demonakou (GR),  
Dr. O. Tzaida (GR)

Cases: Prof. D. Papachristou (GR)

---

### 15.30-16.30 Satellite Symposium (please see page 10)

---

### 16.30-17.30 SESSION VII

Chairpersons: Ass. Prof. T. Koletsa (GR), Em. Prof. S. Scopa (GR)

### 16.30-17.00 Site Specific Soft Tissue Tumors Dr. Siozopoulou V. (BEL)

### 17.00-17.30 The Role of the Oncologist Dr. Zarkavelis G. (GR)

---

### 17.30-18.30 Slide Seminar IV

Chairpersons: Dr. A. Nikolaidou (GR), Dr. S. Papaemmanouil (GR),  
Prof. V. Zolota (GR)

Case 1: Dr. S. Mavropoulou (GR)

Case 2: Dr. M. Kilmpasani (GR), Dr. S. Papaemmanouil (GR)

Case 3: Dr. G. Balis (GR)

Case 4: Dr. S. Sotiriou (GR)

Case 5,6: Dr. S. Sakellariou (GR)

---

### 18.30-19.00 Closing remarks

Chairpersons: Prof. A. Batistatou (GR), Dr. K. Patsiaoura (GR), Prof. V. Zolota (GR)

## General Information

**Date:** Friday, October 9<sup>th</sup> 2020 & Saturday, October 10<sup>th</sup> 2020

**Website:** [pathology.gr](http://pathology.gr)

**Official Language:** The official language of the Course is English.

**Accreditation:** The Congress has been accredited with **13 C.M.E. Credits** by the Panhellenic Medical Association.

**Evaluation Form (*mandatory*) - Certificate of Attendance:** Registered participants will be able to obtain a certificate of attendance as well as CME credits when attending sessions during the Course. The Certificate will be issued only upon completion of the Evaluation Form and will be received via e-mail.

According to the Regulation of the Greek National Organization of Medicines, participation for at least of 60% of the total duration of the scientific program must be secured!

**Compliance:** In compliance with CME requirements all speakers are requested to include a slide disclosing conflicts of interest at the beginning of their presentation. *If you have nothing to disclose, this slide must be included indicating “nothing to disclose”.*

**GDPR:** The Course Secretariat and the Hellenic Society of Pathology compliance with laws and regulations of GDPR. The HSP does not take on any responsibilities for recordings or misuse of your audio contributions carried out by participants.

### Course Secretariat:



Professional Congress Organizer (PCO):

**Myrtaly Congress P.C.**

2 Neomartiros Ioannou Square, 452 21, Ioannina, Greece

T: +30 26510 73519, E: [info@myrtalycongress.gr](mailto:info@myrtalycongress.gr)

W: <https://myrtalycongress.gr>

## Satellite Symposium

Saturday, 10<sup>th</sup> October 2020

---

15.30-16.30 Satellite Symposium  
Chairperson: **Dr. P. Arapantoni-Dadioti (GR)**  
NTRK fusion testing in daily practice  
**E. Skarpidi (GR)**

Sponsored by



## Faculty

<b>Agnantis N. J.</b>	MD, PhD, FRCPath, A.G.E. Emeritus Professor, University of Ioannina, Greece
<b>Agrogiannis G.</b>	MD, PhD, Histopathologist, Associate Professor of Pathology, 1st Department of Pathology, Faculty of Medicine, National and Kapodistrian University of Athens, Greece
<b>Arapantoni-Dadioti P.</b>	MD, PhD, Histopathologist, Head, Pathology Department, "HENRY DUNANT" Hospital Center, Athens, Greece
<b>Balis G.C.</b>	MD, Pathologist, Laboratory of Anatomical Pathology, Corfu, Greece
<b>Batistatou A.</b>	MD, PhD, Professor of Pathology, Director of Department of Pathology, Head of Faculty of Medicine, University of Ioannina, Greece
<b>Bobos M.</b>	MD, PhD, Pathologist, Assistant Professor of Anatomic Pathology, Dept of Biomedical Sciences, School of Health Sciences, International Hellenic University, Alexandrian Campus, Thessaloniki, Greece
<b>Bouklas D.</b>	MD, MSc, PhD candidate, Department of Pathology, "Gennimatas" Athens General Hospital, Greece

# Ioannina University Courses in Pathology (IUCP 2020)

## Soft Tissue Pathology-Oncology

<b>Creytens D.</b>	Pathologist, Head of Clinics, Professor, Soft Tissue and Bone Pathology Ghent University Hospital, Ghent University, Ghent, Belgium
<b>Demonakou M.</b>	MD, PhD, Head of the Pathology Lab, "Sismanoglio" General Hospital, Athens, Greece
<b>Diamantopoulou K.</b>	MD, PhD, Head of Pathology Department, General Hospital of Attica "KAT", Greece
<b>Evangelou Z.</b>	Pathologist, University Hospital of Ioannina, Ioannina, Greece
<b>Galani V.</b>	Associate Professor of Anatomy-Histology-Embryology, Faculty of Medicine, University of Ioannina, Greece
<b>Giannikaki E.</b>	Consultant Pathologist, Department of Pathology, "Venizeleion" General Hospital, Heraklion, Crete, Greece
<b>Goussia A.</b>	Professor of Pathology, Faculty of Medicine, University of Ioannina, Greece
<b>Kamina S.</b>	MD, PhD, Senior Consultant of Pathology, Department of Pathology, University Hospital of Ioannina, Ioannina, Greece
<b>Kilmpasani M.</b>	Pathologist, University Hospital of Ioannina, Ioannina, Greece
<b>Koletsa T.</b>	Assistant Professor of Pathology, Faculty of Medicine, Aristotle University of Thessaloniki, Greece
<b>Korkolopoulou P.</b>	Professor of Pathology, First Department of Pathology, Faculty of Medicine, National and Kapodistrian University of Athens, Greece
<b>Linos K.</b>	Assistant Professor of Bone, Soft Tissue and Dermatopathology, Geisel School of Medicine at Dartmouth, USA
<b>Mavropoulou S.</b>	MD, Consultant Pathologist, Pathology Department, General Hospital of Xanthi, Greece
<b>Mitselou A.</b>	Assistant Professor of Pathology, Faculty of Medicine, University of Ioannina, Greece
<b>Mourtzoukou D.</b>	Histopathologist, "Istomedica" Histopathology Lab, Athens, Greece
<b>Nikolaidou A.</b>	MD, PhD, Pathologist, Director of Department of Pathology, "Theageneio" Cancer Hospital, Thessaloniki, Greece
<b>Papachristou D.</b>	MD, PhD, Consultant Histopathologist, Professor, School of Medicine University of Patras, Greece / Scientific Coordinator, Unit of Bone and Soft Tissue Studies, Dept. of Anatomy-Histology-Embryology, Adj. Professor, Dept. of Pathology, Univ. of Pittsburgh, Pittsburgh, PA, USA / Scientific Coordinator, Dept. of Pathology, "Olympion" General Clinic, Patras, Greece
<b>Papaemmanouil S.</b>	Consultant Pathologist, Head Pathology & Cytology Department, General Hospital "G. Papanikolaou ", Thessaloniki, Greece



# Ioannina University Courses in Pathology (IUCP 2020)

## Soft Tissue Pathology-Oncology

<b>Papoudou-Bai A.</b>	Assistant Professor of Pathology, Faculty of Medicine, School of Health Sciences, University of Ioannina, Greece
<b>Patsea E.</b>	Head of Department of Pathology, “Metropolitan General” Hospital, Greece
<b>Patsiaoura K.</b>	MD, PhD, Head, Pathology Department, General Hospital of Thessaloniki “Agios Pavlos”, Greece
<b>Peschos D.</b>	Associate Professor of Physiology, Faculty of Medicine, University of Ioannina, Greece
<b>Sakellariou S.</b>	Histopathologist, Assistant Professor, 1st Dept of Pathology, Medical School, National and Kapodistrian University of Athens
<b>Scopa Ch.</b>	Emeritus Professor, University of Patras, Greece
<b>Siozopoulou V.</b>	Medical Doctor, Department of Pathology, Antwerp University Hospital, Belgium
<b>Skarpidi E.</b>	MD, DABP, FCAP, Scientific Director, Micromedica Labs, Athens, Greece
<b>Sotiriou S.</b>	MD, MSc, Department of Laboratory Medicine and Pathology, Mayo Clinic, Rochester, Minnesota, USA
<b>Sourla A.</b>	MD, PhD, Pathologist, Pathology Department, Bioiatriki Laboratories, Scientific Collaborator in Pathology Department of Medical School, Athens University, Greece
<b>Tzaida O.</b>	MD, PhD, Pathologist, Head of the Pathology Department, “Metaxa” Cancer Hospital, Piraeus, Greece
<b>Zarkavelis G.</b>	Medical Oncologist, Oncology Department, University Hospital of Ioannina, Ioannina, Greece
<b>Zioga A.</b>	Senior Consultant Pathologist, University Hospital of Ioannina, Greece
<b>Zizi A.</b>	MD, PhD, Pathologist, Director, Pathology Department "Tzaneion" General Hospital of Piraeus, Greece
<b>Zolota V.</b>	Professor of Pathology, Medical School, University of Patras, Rion, Patras, Greece

## Sponsors

The Hellenic Society of Pathology gratefully acknowledges the financial support of:



**ΠΛΗΡΩΣ ΑΥΤΟΜΑΤΗ ΑΝΟΣΟΪΣΤΟΧΗΜΕΙΑ**

**VALENT**<sup>®</sup>  
The Power of Advanced Automation  
[www.biocare.net/valent](http://www.biocare.net/valent)

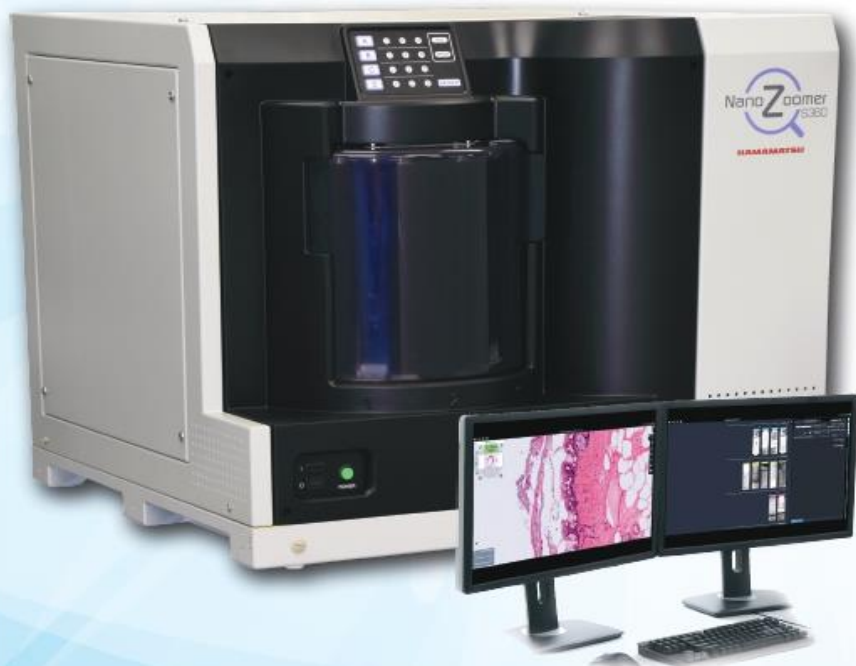
**BIOCARE**  
MEDICAL

- ▶ Χωρητικότητα 48 πλακιδίων.
- ▶ Διαχωρισμός τοξικών - μη τοξικών αποβλήτων.
- ▶ Ανάκτηση αντιγόνων τελευταίας τεχνολογίας.



**DIGITAL PATHOLOGY**

**NanoZoomer**



**HAMAMATSU**  
PHOTON IS OUR BUSINESS

- ▶ Σαρωτές Hamamatsu, ιαπωνικής τεχνολογίας.
- ▶ Εναλλακτικές επιλογές χωρητικότητας πλακιδίων.
- ▶ Λογισμικό για διάγνωση εξ αποστάσεως.

**ΑΘΗΝΑ:** Μιχαλακοπούλου 116, 115 27 Ιλίσια, **T 210 7795980, F 210 7716932**

**ΘΕΣΣΑΛΟΝΙΚΗ:** Κτίριο SPECTRA, 12ο χλμ Θεσσαλονίκης - Ν. Μουδανιών, **www.antisel.gr**  
570 01 Θέρμη, **T 231 0322525, F 231 0321912, E antisel@antisel.gr**



# KEYTRUDA<sup>®</sup>

(pembrolizumab) 100mg for Infusion

Βοηθήστε να γίνουν τα φάρμακα πιο ασφαλή και  
Αναφέρετε  
ΟΛΕΣ τις ανεπιθύμητες ενέργειες για  
ΟΛΑ τα φάρμακα  
Συμπληρώνοντας την «ΚΙΤΡΙΝΗ ΚΑΡΤΑ»

Πριν τη συνταγογράφηση συμβουλευθείτε την Πλήρη Περιλήψη Χαρακτηριστικών του προϊόντος που διατίθεται από την εταιρεία.



**MSD**

Αθήνα: Αγ. Δημητρίου 63, 174 56 Άλιμος, Τηλ.: 210 98 97 300, [www.msd.gr](http://www.msd.gr)

**MSD Oncology**